

simodont

A NISSIN BRAND



What is new in v4.8.1

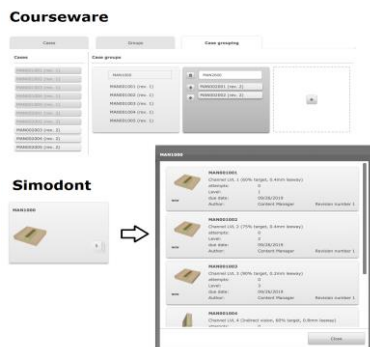
Simodont Courseware Release v4.8.1



WHAT IS NEW IN V4.8.1

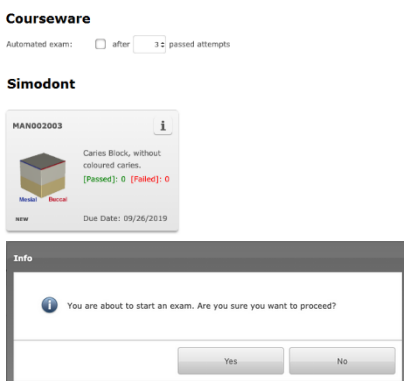
Nissin Dental Products is pleased to inform you of the new software release version 4.8.1. This document is a short summary of the highlights in this release and what it offers you as a Simodont user.

New functionality



Case grouping

Because the number of assignments can grow pretty fast for a student, the case overview on the Simodont becomes very long. By the use of case grouping, the teacher is able to select and arrange cases in a group which will then be shown in a single case tile on the Simodont.

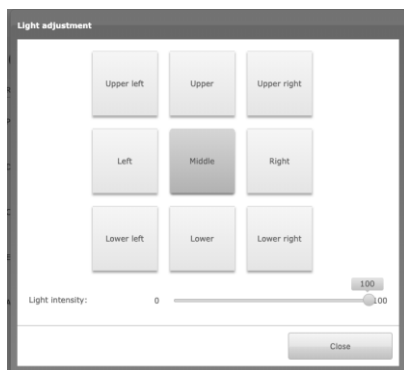


Automated exam for manual dexterity cases with statistics & formula

Automated exam is a new feature which offers to create a course with manual dexterity cases that have statistics enabled and contain a valid formula. It makes it possible to have the student do an exam after a certain amount of passed attempts.

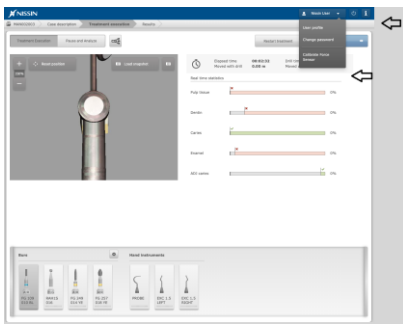
Once the exam starts, the student gets notified that the exam is about to begin. When the student passes the exam, he/she is unable to start it again and complete the case. However, if the student fails the exam, he/she needs to pass the same number of attempts before the new exam is started.

The "course data report" shows if an attempt was executed as an exam.



Adjustable headlight position

It is now possible to change the headlight position into nine different defined positions. Also, it is possible to change the light intensity. This way more detail can be seen without rotating the model.



Exam option in curriculum course

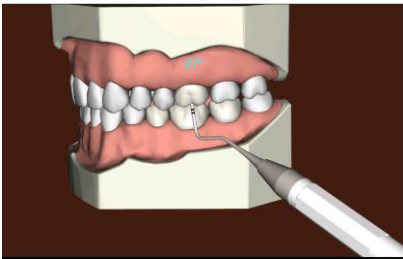
By enabling the exam option into the course, the student is prevented to close the attempt by clicking Stop case or Logout. This way it is made sure that students submit their work.

This option also enables auto snapshots every 5 minutes such that the student is always able to reload his work on another Simodont with teacher approval.



Students chosen treatment plan

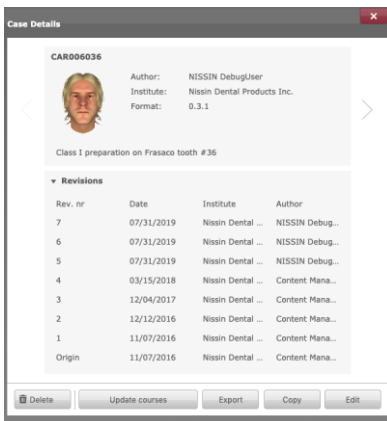
It is now possible to define a list of treatment plans which the student will get to see and from which he/she will have to select one when running the case on the Simodont. The chosen treatment will be saved and can be exported by the "course data report".



Added haptic feedback on main's opposite element

To do the right measurements, you need to be able to feel the opposite tooth in the antagonist. From this release on the opposite element can also be touched when this is present in the model.

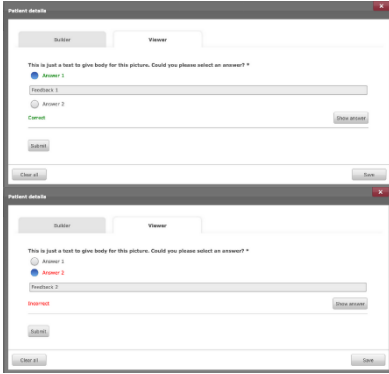
Improved functionality



Possibility to update courses with new case revisions after publish

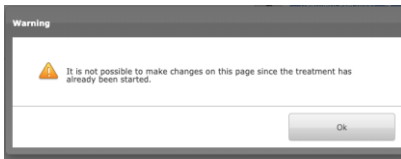
Many customers asked for an easier way to update cases that were already planned in courses. Instead of having to adjust the course and swap case revisions, which was a very tedious process, you now only have to tick the box when publishing a new case revision to update all courses (or a selection of courses) at once.

If you choose not to update the case revision into the courses during the publish action, you can always update it later with the "Update courses" button on the case details popup.



Show answer button in Q&A forms

Instead of live feedback we added a “Show answer” button for the student to confirm his/her given answer. This extra step gives the option for the student to reconsider their answer given and to fill in a multiple answers question without getting feedback directly with each checkbox.



Notification shown when student navigates back when the treatment has already started

When a student navigates back to the treatment plan or instrument selection page, he/she is not able to change any answers. This was already present in previous releases, but this warning makes it more clear to the student.

New Content

No new content has been added



Nissin Dental Products Europe BV

Pesetaweg 51 | 2153PJ Nieuw-Vennep | The Netherlands

Phone: +31 252 462 025

www.simodontdentaltrainer.com

www.nissin-dental.net