

What is new

Simodont Courseware v4.16



WHAT IS NEW IN V4.16

Nissin Dental Products is pleased to inform you of the new software, release version 4.16. This document is a short summary of the highlights in this release and what it offers you as a Simodont user. For the complete list of changes please refer to the Release Notes.

New functionality



PRO700 – Create a synergy between training in the physical and virtual world with the same model

The v4.16 introduces the newest Nissin typodont available, the PRO700. This model offers highly detailed crown morphology and a wide variety of tooth series for different training purposes*.

Simodont users can create numerous cases based on the sound teeth series:

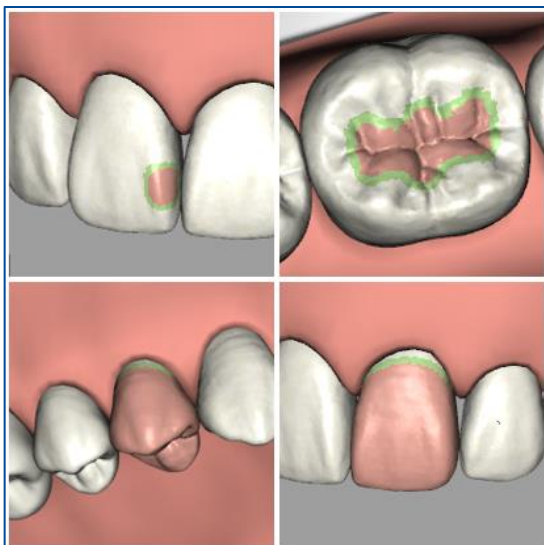
- A5 Sound single layer teeth (enamel)
- A20 Sound double layer teeth (enamel and dentin)

A large collection of predefined cases is offered for the following tooth series:

- 11 caries cases, multi layered teeth (A27)
- 6 endo cases, multi layered teeth (B22)
- 12 target in tooth cases (6 caries / 6 crown) based on the ideal prep teeth (A21/A25)

Please refer to the Simodont content catalog for the complete overview of all available cases.

**Not available in some areas.*



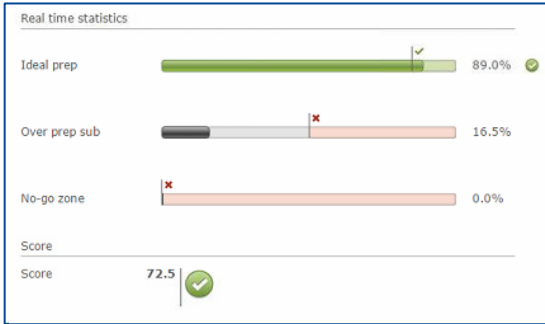
Target in tooth – PRO700

This release introduces a series of exercises with a new concept called "Target in Tooth". The models for these cases are created by embedding the ideal prep information of the PRO700-A21/A25 tooth in a sound double layered tooth from the PRO700-A20 series.

These 'TT' exercises are the next step after manual dexterity training and before starting training on real simulated patient cases.

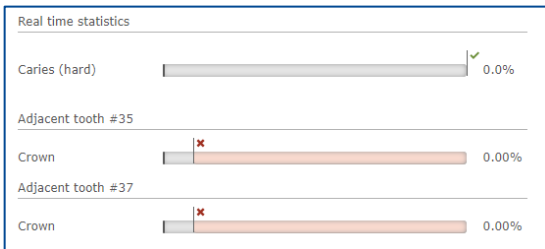
Students will get visual feedback of the target and leeway zones in the tooth. This visual aid can be turned off during practice or even be disabled for examination.

The segment statistics show objective scoring of the amount tissue that has been removed for each zone.



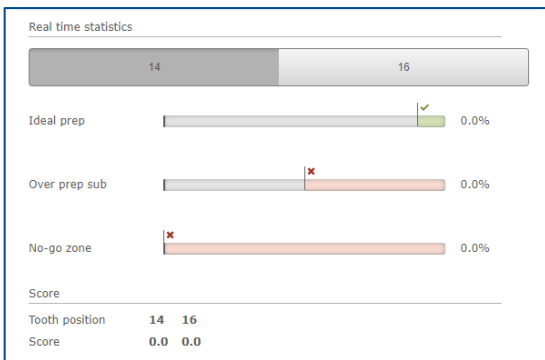
The student's performance is reflected in a final score calculated from the segment statistics, as is done for the manual dexterity block exercises. If preferred, teachers are able to adjust the calculation of the score to their own preferences.

Improved functionality



Assessment of the adjacent teeth

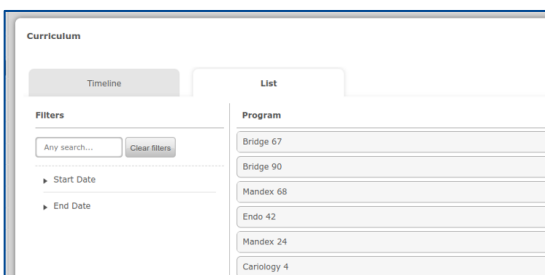
There's the possibility to track whether a student has touched the adjacent teeth in real time. Any damage on the adjacent teeth is shown in the segment statistics overview, which can be made available to the student. The teacher can determine the effect of damage, and to what extent, on the success or failure of an exercise.



Bridge improvements

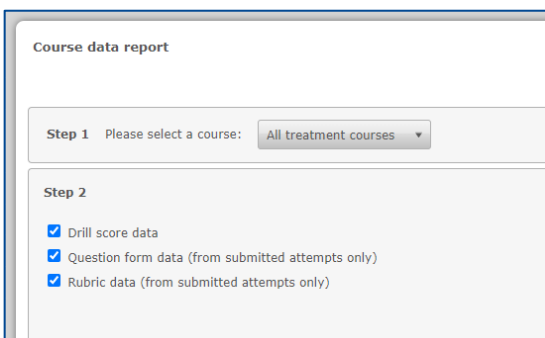
It is now possible to show the segment statistics for both main teeth in a bridge case. The student can easily switch between the two main teeth.

Also the glass grid tool it is now able to switch position from one main tooth to the other main tooth in bridge cases.



List view in curriculum planner

The courses in the curriculum planner can be presented in a list view. By default, only active courses are shown



Reporting improvements

It is now possible to export and report the rubric results from a case.

Student number, start time/date and end time/date were added to the group/user/case CSV export.

Course names are ordered alphabetically.



Nissin Dental Products Europe BV

Pesetaweg 51 | 2153 PJ Nieuw-Vennep | The Netherlands

Phone: +31 85 081 4900

www.simodontdentaltrainer.com

www.nissin-dental.net