

# What is new

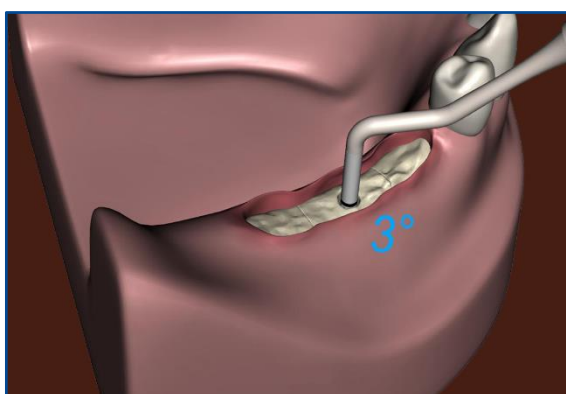
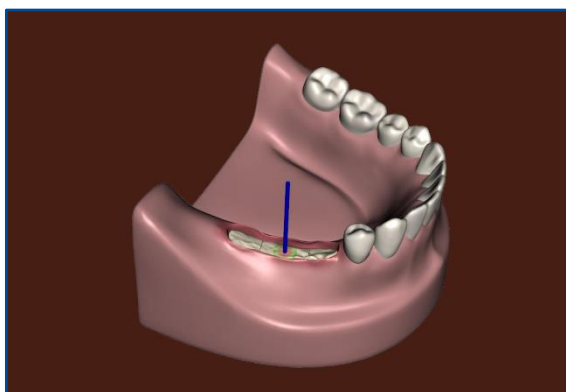
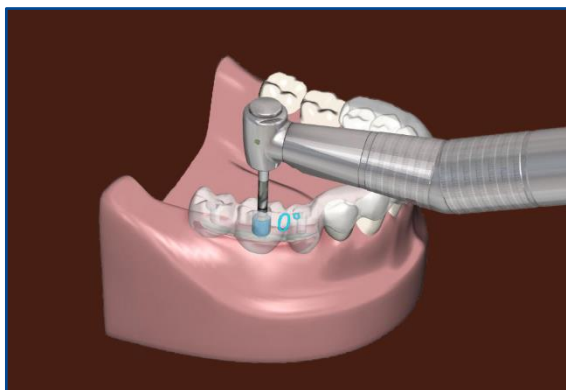
*Simodont Courseware v4.18*



## WHAT IS NEW IN V4.18

Nissin Dental Products is pleased to inform you of the new software release version v4.18. This document will give a short summary of the highlights in this release and what it offers you as a Simodont user. For the complete list of changes please refer to the Release Notes.

### New functionality



#### IMPLANTOLOGY – NEW procedure in Simodont!

The v4.18 software introduces the implantology procedure on Simodont. New cases are provided with a variation of guided and free-hand implantology drilling, and with and without the assistance of virtual tools. This new feature set includes:

- 9 new implant cases based on the Nissin IMP5003 model, positions 45, 46, 47.
  - Level 1: Guided drilling with help of assistive tools
  - Level 2: Guided and free-hand drilling with help of assistive tools
  - Level 3: Free-hand drilling without help of assistive tools.
- Optional haptic drill guide.
- Jawbone with cortical and cancellous bone layers and a mandibular nerve canal. The gingiva in this model is already opened and the jawbone is exposed, ready for treatment.
- Various sizes of implant drills with visual depth markings, with the option of real-time bur angulation to guide the student while drilling.
- Depth gauges with marking and optional angle assistance to measure the depth and angle of the preparation.
- Optional visualization of the ideal preparation axis.
- Optional visualization of the ideal preparation (target).
- Automatic objective assessment of the preparation using target scoring.
- Optional semi-transparency of the jawbone to inspect for damage to the nerve canal.

Please refer to the content catalog for a complete overview of the new implantology cases.



### **Support for patient scans in color (PLY)**

In addition to the support for patient scans without color (STL), the v4.18 release introduces the support for patient scans containing color information.

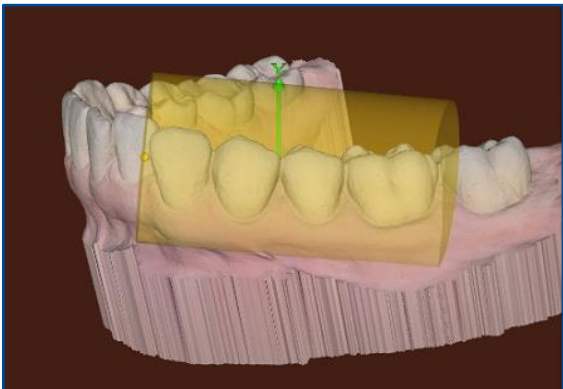
Both PLY files with built-in color information, and PLY files with a reference to external textures can now be imported in the Simodont Courseware.

The preview of the uploaded scan is shown in the wizard. The model is made watertight for better results when converting the scan into a 3D drillable model.

Patient scans can be uploaded via the:

- Patient Scan page – for single use.
- Models page – for repetitive use.

*(OBJ files are not supported)*



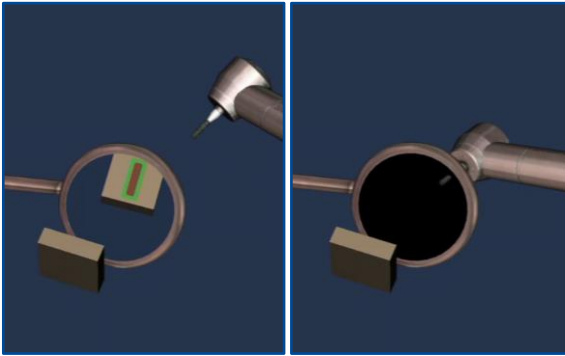
### **Cropping scans directly in the Simodont Courseware**

The v4.18 release makes it possible to crop the patient scan directly within the Simodont Courseware. Before it was necessary to crop the scan to the appropriate size with an external cropping tool. Now, the selection of the so-called 'region of interest' is done as part of the workflow which makes working with patient scans much easier and faster.

The part of the scan located inside the 'region of interest' is converted into a haptic drillable model. The remainder of the scan is not shown in the simulator for performance reasons.

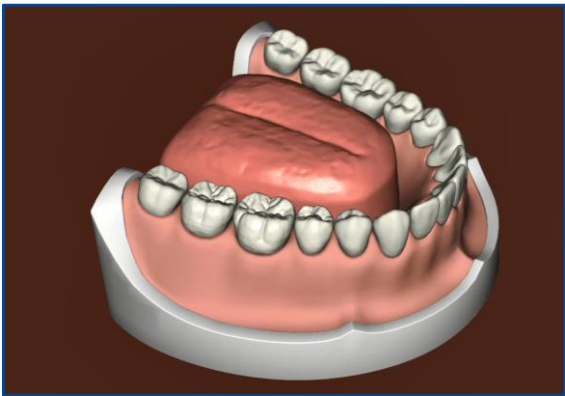
---

## Improved functionality



### Mirror turning black

The mirror surface turns black when the drill touches the mirror. Thereby it is not possible anymore to cheat by preparing a tooth using the drill through the mirror.



### PRO700 tongue added and background color updated

A tongue was added to the PRO700 model. The tongue is haptic. It is possible to move the tongue with the mirror for better access to the teeth. And the background color of the PRO700 model is now red like other models.

---

## Various improvements/changes

- Improvement - The export of the full course data report is now much faster than it used to be.
- Improvement - When the connection between the Simodont and the Simodont server is lost, you are no longer automatically logged out. To prevent unsaved work getting lost, some buttons are disabled during connection loss. When the connection is restored the user can continue the exercise as normal.
- Change - The Automatic Objective Assessment feature has been removed from the Simodont Courseware. Due to the limited use and possibilities of this feature, and the introduction of the Target in Tooth functionality in the v4.16 release, it was decided to remove the Automatic Objective Assessment feature functionality from the Simodont Courseware.
- Change - The option to track the 'mirror movement' was removed from the Simodont dental trainer's treatment execution page.



Nissin Dental Products Europe BV

Pesetaweg 51 | 2153 PJ Nieuw-Vennep | The Netherlands

Phone: +31 85 081 4900

[www.simodontdentaltrainer.com](http://www.simodontdentaltrainer.com)

[www.nissin-dental.net](http://www.nissin-dental.net)